



INLAND

\$55 BILLION PURCHASED
Apts, Self-Storage, Medical Office, Mobile Homes,
Grocery Centers, Senior Housing

630.218.4948
[CLICK HERE](#)



INLAND

\$55 BILLION PURCHASED
Apts, Self-Storage, Medical Office, Mobile Homes,
Grocery Centers, Senior Housing

630.218.4948
[CLICK HERE](#)

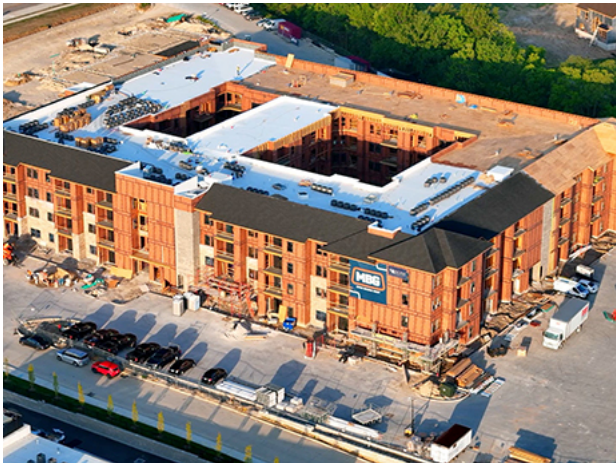
INLAND

\$55 BILLION PURCHASED
Apts, Self-Storage, Medical Office, Mobile Homes,
Grocery Centers, Senior Housing

630.218.4948
[CLICK HERE](#)

THE NAME TO BUILD ON.™
remaxcommercial.com

RE/MAX COMMERCIAL
©2025 RE/MAX, LLC. Each Office Independently Owned and Operated. 25_009



MBG is the general contractor for Prairie Encore in Dardenne Prairie, Mo.

Development Midwest Missouri Multifamily

Mia Rose Holdings Underway on Development of 190-Unit Luxury Apartment Complex in Metro St. Louis

June 25, 2025

DARDENNE PRAIRIE, MO. — Mia Rose Holdings is underway on the development of Prairie Encore, a 190-unit luxury apartment complex in the St. Louis suburb of Dardenne Prairie. General contractor MBG is building the project, which is slated for Phase I completion this fall. The development, which will also feature Sugarfire, Macadoodles and Starbucks, comes on the heels of the debut of The Prairie Luxury Apartments in 2023. Mia Rose and MBG also built that property. Between the two projects, Mia Rose is investing \$150 million in the Dardenne Prairie community.

Prairie Encore features a figure-eight building design with two separate courtyards. A 3,310-square-foot lobby connects to a leasing office, coffee bar, kitchen bar, fitness center and other common spaces. Units will come in studio, one-, two- and three-bedroom floor plans. A 669-square-foot coworking suite will be housed on the second floor. Additional amenities will include a dog park, gathering spaces, a pool and turf areas with barbecue grills. Community gathering spaces as well as sand volleyball and pickleball will be within walking distance at Sugarfire.

Prairie Encore marks the sixth luxury community for MBG in St. Charles County since 2023, encompassing 1,068 units.

Upcoming Events

Aug 18 InterFace Kansas City Retail 2025

Aug 18 InterFace Kansas City Multifamily 2025

- Aug
19

InterFace Kansas City
Industrial 2025
- Aug
20

InterFace Houston Retail &
Mixed-Use 2025
- Aug
20

InterFace Houston Industrial
2025
- Aug
26

InterFace Affordable
Housing Southern California
2025
- Aug
27

InterFace Seniors Housing
Southeast 2025
- Sep
04

InterFace Healthcare Real
Estate 2025
- Sep
04

InterFace Phoenix Retail
2025
- Sep
04

InterFace Phoenix
Multifamily 2025
- Sep
05

InterFace Phoenix Industrial
2025
- Sep
09

InterFace DFW & North
Texas Retail 2025
- Sep
09

InterFace DFW & North
Central Texas Industrial 2025
- Sep
10

InterFace Austin Multifamily
2025
- Sep
11

InterFace Las Vegas
Industrial 2025
- Sep
11

InterFace Las Vegas
Multifamily 2025

INTERFACE

CONFERENCE GROUP

SUBSCRIBE TO EMAILS

60 Conferences

SHARE

f

X

in

previous post

KSI AUTO PARTS SIGNS 100,456 SF
INDUSTRIAL LEASE IN ROMULUS, MICHIGAN

next post

INSPIRED BY SOMERSET DEVELOPMENT
BREAKS GROUND ON PHASE II OF BELL
WORKS CHICAGOLAND

YOU MAY ALSO LIKE

- IPA NEGOTIATES SALE OF 236-
UNIT APARTMENT COMPLEX
IN...

July 2, 2025
- NEWMARK ARRANGES \$515M
LOAN FOR REFINANCING OF
JERSEY...

July 2, 2025
- PROCOPIO COS. COMPLETES
290-UNIT MULTIFAMILY
PROJECT IN HAVERHILL,...

July 2, 2025

Sep
25

InterFace Multifamily Texas
2025

Oct
08

InterFace Net Lease 2025

Li
Tr

M
D
S
O

Li
Al

